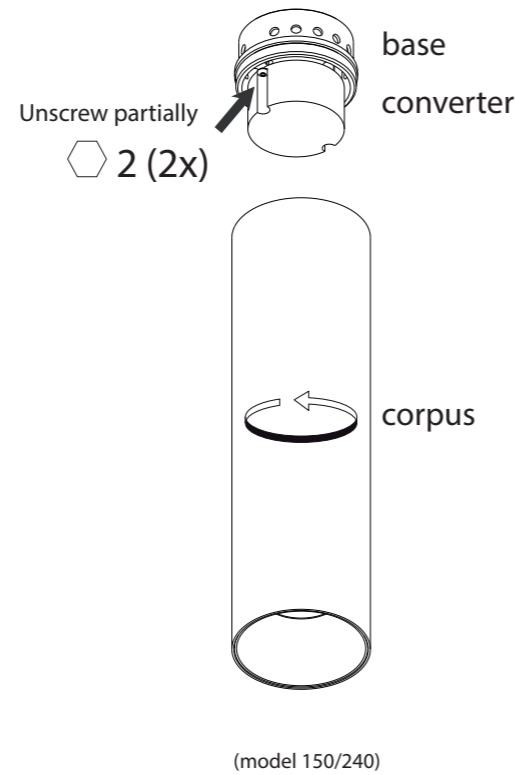


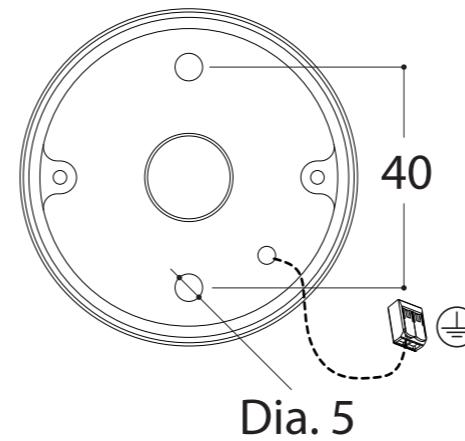
Name	FUNNEL ON CI																																																					
Reference	FUNNEL ON 150 CI																																																					
	479426	FUNNEL ON 150 CI 2700	TEXT BLACK																																																			
	479436	FUNNEL ON 150 CI 3000	TEXT BLACK																																																			
	479446	FUNNEL ON 150 CI 4000	TEXT BLACK																																																			
	479447	FUNNEL ON 150 CI 2700	TEXT WHITE																																																			
	479457	FUNNEL ON 150 CI 3000	TEXT WHITE																																																			
	479467	FUNNEL ON 150 CI 4000	TEXT WHITE																																																			
	479482	FUNNEL ON 150 CI 2700	TEXT WHITE + GOLD																																																			
	479492	FUNNEL ON 150 CI 3000	TEXT WHITE + GOLD																																																			
	479472	FUNNEL ON 150 CI 4000	TEXT WHITE + GOLD																																																			
	479486	FUNNEL ON 150 CI 2700	TEXT BLACK + GOLD																																																			
	479486	FUNNEL ON 150 CI 3000	TEXT BLACK + GOLD																																																			
	479496	FUNNEL ON 150 CI 4000	TEXT BLACK + GOLD																																																			
	<table border="1"> <thead> <tr> <th colspan="3">FUNNEL ON 240 CI</th> </tr> </thead> <tbody> <tr> <td>479526</td> <td>FUNNEL ON 240 CI 2700</td> <td>TEXT BLACK</td> </tr> <tr> <td>479536</td> <td>FUNNEL ON 240 CI 3000</td> <td>TEXT BLACK</td> </tr> <tr> <td>479546</td> <td>FUNNEL ON 240 CI 2700</td> <td>TEXT BLACK</td> </tr> <tr> <td>479547</td> <td>FUNNEL ON 240 CI 2700</td> <td>TEXT WHITE</td> </tr> <tr> <td>479557</td> <td>FUNNEL ON 240 CI 3000</td> <td>TEXT WHITE</td> </tr> <tr> <td>479567</td> <td>FUNNEL ON 240 CI 4000</td> <td>TEXT WHITE</td> </tr> <tr> <td>479582</td> <td>FUNNEL ON 240 CI 2700</td> <td>TEXT WHITE + GOLD</td> </tr> <tr> <td>479592</td> <td>FUNNEL ON 240 CI 3000</td> <td>TEXT WHITE + GOLD</td> </tr> <tr> <td>479572</td> <td>FUNNEL ON 240 CI 4000</td> <td>TEXT WHITE + GOLD</td> </tr> <tr> <td>479586</td> <td>FUNNEL ON 240 CI 2700</td> <td>TEXT BLACK + GOLD</td> </tr> <tr> <td>479596</td> <td>FUNNEL ON 240 CI 3000</td> <td>TEXT BLACK + GOLD</td> </tr> <tr> <td>479576</td> <td>FUNNEL ON 240 CI 4000</td> <td>TEXT BLACK + GOLD</td> </tr> </tbody> </table>			FUNNEL ON 240 CI			479526	FUNNEL ON 240 CI 2700	TEXT BLACK	479536	FUNNEL ON 240 CI 3000	TEXT BLACK	479546	FUNNEL ON 240 CI 2700	TEXT BLACK	479547	FUNNEL ON 240 CI 2700	TEXT WHITE	479557	FUNNEL ON 240 CI 3000	TEXT WHITE	479567	FUNNEL ON 240 CI 4000	TEXT WHITE	479582	FUNNEL ON 240 CI 2700	TEXT WHITE + GOLD	479592	FUNNEL ON 240 CI 3000	TEXT WHITE + GOLD	479572	FUNNEL ON 240 CI 4000	TEXT WHITE + GOLD	479586	FUNNEL ON 240 CI 2700	TEXT BLACK + GOLD	479596	FUNNEL ON 240 CI 3000	TEXT BLACK + GOLD	479576	FUNNEL ON 240 CI 4000	TEXT BLACK + GOLD												
FUNNEL ON 240 CI																																																						
479526	FUNNEL ON 240 CI 2700	TEXT BLACK																																																				
479536	FUNNEL ON 240 CI 3000	TEXT BLACK																																																				
479546	FUNNEL ON 240 CI 2700	TEXT BLACK																																																				
479547	FUNNEL ON 240 CI 2700	TEXT WHITE																																																				
479557	FUNNEL ON 240 CI 3000	TEXT WHITE																																																				
479567	FUNNEL ON 240 CI 4000	TEXT WHITE																																																				
479582	FUNNEL ON 240 CI 2700	TEXT WHITE + GOLD																																																				
479592	FUNNEL ON 240 CI 3000	TEXT WHITE + GOLD																																																				
479572	FUNNEL ON 240 CI 4000	TEXT WHITE + GOLD																																																				
479586	FUNNEL ON 240 CI 2700	TEXT BLACK + GOLD																																																				
479596	FUNNEL ON 240 CI 3000	TEXT BLACK + GOLD																																																				
479576	FUNNEL ON 240 CI 4000	TEXT BLACK + GOLD																																																				
Specifications	<table border="1"> <tr> <td>Safe distance to object</td> <td colspan="2"> - 0,1m - </td> </tr> <tr> <td>Lamptype</td> <td colspan="2">LUXEON M</td> </tr> <tr> <td>CCT</td> <td colspan="2">2700 K / 3000 K / 4000K</td> </tr> <tr> <td>Luminous flux</td> <td colspan="2">2700K: 755lm / 3000K: 810lm / 4000K: 905lm</td> </tr> <tr> <td>Power</td> <td colspan="2">7,84 W</td> </tr> <tr> <td>Current</td> <td colspan="2"></td> </tr> <tr> <td>Voltage</td> <td colspan="2">230V 50-60Hz AC</td> </tr> <tr> <td>Symbol</td> <td colspan="2"></td> </tr> <tr> <td>Gear</td> <td colspan="2">Converter incorporated</td> </tr> <tr> <td>IP / Class</td> <td colspan="2"> IP20</td> </tr> <tr> <td>Application</td> <td colspan="2"> Ceiling mounted</td> </tr> <tr> <td>Orientability</td> <td colspan="2">None</td> </tr> <tr> <td>Dimmability</td> <td colspan="2">mains dimmable RC (via dimlist type O)</td> </tr> <tr> <td>Beamangle</td> <td colspan="2">36°</td> </tr> <tr> <td>CRI</td> <td colspan="2">90</td> </tr> <tr> <td>SDCM</td> <td colspan="2">3</td> </tr> <tr> <td>Weight</td> <td colspan="2">See above</td> </tr> </table>			Safe distance to object	- 0,1m -		Lamptype	LUXEON M		CCT	2700 K / 3000 K / 4000K		Luminous flux	2700K: 755lm / 3000K: 810lm / 4000K: 905lm		Power	7,84 W		Current			Voltage	230V 50-60Hz AC		Symbol			Gear	Converter incorporated		IP / Class	IP20		Application	Ceiling mounted		Orientability	None		Dimmability	mains dimmable RC (via dimlist type O)		Beamangle	36°		CRI	90		SDCM	3		Weight	See above	
Safe distance to object	- 0,1m -																																																					
Lamptype	LUXEON M																																																					
CCT	2700 K / 3000 K / 4000K																																																					
Luminous flux	2700K: 755lm / 3000K: 810lm / 4000K: 905lm																																																					
Power	7,84 W																																																					
Current																																																						
Voltage	230V 50-60Hz AC																																																					
Symbol																																																						
Gear	Converter incorporated																																																					
IP / Class	IP20																																																					
Application	Ceiling mounted																																																					
Orientability	None																																																					
Dimmability	mains dimmable RC (via dimlist type O)																																																					
Beamangle	36°																																																					
CRI	90																																																					
SDCM	3																																																					
Weight	See above																																																					

Installation

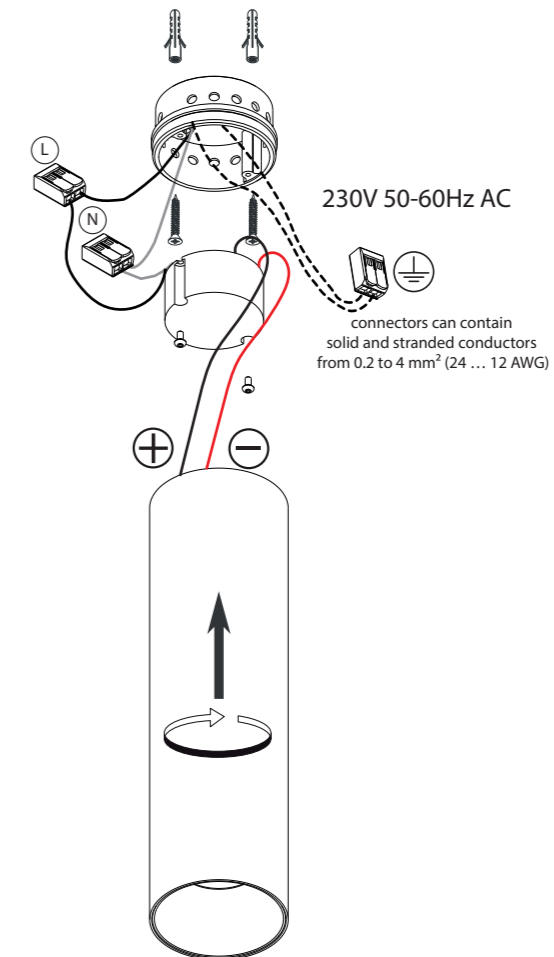
① Remove corpus and converter from base



② Use base drill pattern on ceiling



③ Fix base to ceiling and make connection with power supply LEAVE UNSWITCHED



④ Remount driver with 2 screws

⑤ Connect driver with ledmodule

⑥ Remount the corpus to the base by turning clockwise

⑦ Turn on the mains power supply



NL Installatie- en onderhoudsrichtlijnen m.b.t. de fabrieksgarantie.
1. De plaatsing, de aansluiting en het uittesten van dit toestel dient steeds te gebeuren door een erkend elektro-installeateur.
2. Dit toestel moet geïnstalleerd, verbonden en getest worden volgens de nationaal geldende reglementen op elektrische installaties.
3. De technische bijsluiter dient te worden beschouwd als een onderdeel van de algemene verkoopsvoorwaarden van TAL nv.
4. De elektro-installeateur is verantwoordelijk voor het gebruik van compatibele voorschakelapparatuur die voldoen aan de geldende IEC normen.
5. Reinig het toestel enkel met een zachte en lichtvochtige doek zonder reinigingsmiddel.
6. Schakel altijd eerst de elektriciteit uit alvorens het toestel te plaatsen en te installeren.

EN Installation and maintenance instructions regarding the manufacturer's warranty.
1. Installation, connection and testing of this product must always be performed by a certified electrician.
2. This product must be installed, connected and tested in accordance with the applicable national regulations for electrical installations.
3. The technical manual must be regarded as part of the general sales conditions of TAL nv.
4. The electrical installer is responsible for the use of compatible control gear that meets the applicable IEC standards.
5. Only clean the device with a soft and slightly moist cloth without detergent.
6. Always switch off the electricity supply before installing and connecting the product.

DE Installations- und Wartungsanweisungen bezüglich der Herstellergarantie.
1. Installation, Anschluß und Prüfung dieses Geräts soll nur von einem anerkannten Elektriker ausgeführt werden.
2. Dieses Gerät soll in Übereinstimmung mit den nationalen geltenden Vorschriften für Elektroinstallationen installiert, angeschlossen und geprüft werden.
3. Die technische Anleitung muß als Teil der allgemeinen Verkaufsbedingungen von TAL nv betrachtet werden.
4. Der Elektroinstallateur ist verantwortlich für die Verwendung von kompatiblen Betriebsgeräten, die den geltenden IEC-Normen entsprechen.
5. Reinigen Sie das Gerät nur mit einem weichen und leicht feuchten Tuch ohne Reinigungsmittel.
6. Schalten Sie den Strom immer aus, bevor Sie das Gerät installieren und anschließen.

FR Instructions d'installation et d'entretien concernant la garantie du fabricant.
1. L'installation, la connexion et les essais de cet appareil doivent toujours être effectués par un électricien reconnu.
2. Cet appareil doit être installé, raccordé et testé conformément aux réglementations nationales pour les installations électriques.
3. La notice technique doit être considérée comme faisant partie des conditions générales de vente de TAL SA.
4. L'installateur électrique est responsable de l'utilisation d'un équipement de contrôle compatible qui satisfait aux normes CEI applicables.
5. Nettoyez l'appareil uniquement avec un chiffon doux et légèrement humide sans détergent.
6. Éteignez toujours l'électricité avant d'installer et de connecter l'appareil.



ALWAYS DISCONNECT MAINS POWER SUPPLY
FROM CONVERTER BEFORE SWITCHING "ON"
LED LUMINAIRES TO PREVENT HOT PLUGGING ISSUES